



# PeptideVerify | Certificate of Analysis

INDEPENDENT THIRD-PARTY PEPTIDE VERIFICATION

PREMIUM

Report PV-690108-5RMU

<b>CERTIFICATE ID</b> PV-690108-5RMU	<b>ISSUE DATE</b> 02/05/2026	<b>BATCH/LOT</b> ALPRT2001	<b>CUSTOMER</b> Alphamino
<b>SAMPLE DESCRIPTION</b> Retatrutide	<b>EXPECTED MW</b> 4731.4 Da	<b>ANALYSIS DATE</b> 28/04/2026 08:28	<b>INSTRUMENT</b> LCMS Line 1

## VERIFICATION SUMMARY

Purity (HPLC)  
**99.02%**  
*Single peak (PPI)*

Mass Match

N/A

## ANALYTICAL RESULTS

---

VERIFIED PURITY

**99.02%**

*HPLC Analysis - Single Peak*

MAIN PEAK

**#1 @ 10.005 min**

TOTAL PEAKS

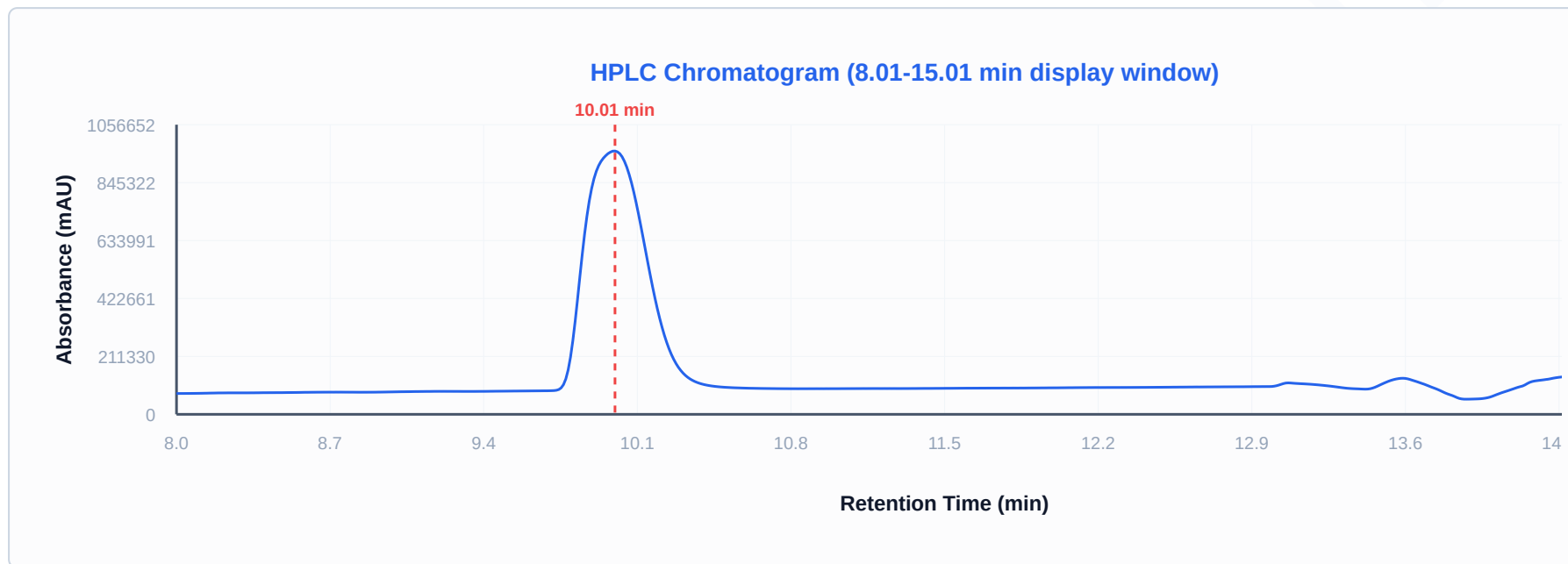
**1**

DETECTION

**215 nm ( $\pm 4$ )**

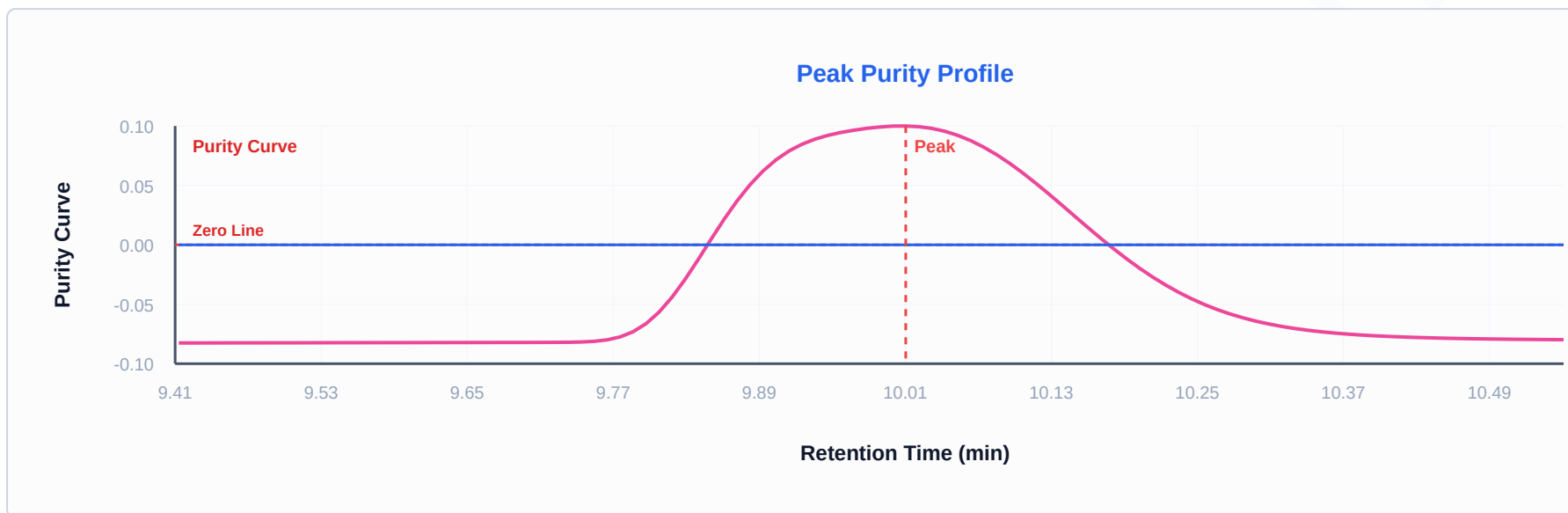
DEPTID DEV EY

# HPLC CHROMATOGRAM



Detection: 215 nm ( $\pm 4$  nm)

## PEAK PURITY PROFILE



## PEAK INTEGRATION DATA

PEAK #	RETENTION (MIN)	AREA	HEIGHT	AREA %	WIDTH (MIN)	RESOLUTION (RS)	TAILING	PLATES (N)
1	10.005	16,837,593	N/A	99.02%	—	—	1.24	6,919

Resolution color-coded: Green ( $R_s \geq 2.0$  or N/A for single peak), Yellow ( $R_s \geq 1.0$ ), Red ( $R_s < 1.0$ ). Values calculated from instrument data or derived from peak widths (USP <621>).

## METHOD INFORMATION

Instrument	LCMS Line 1
Software	LabSolutions 5.97
Analyst	System Administrator
Method	HPLC
Detection	215 nm ( $\pm 4$ nm)

## ANALYST NOTES

Batch - ALPRT2001

**Purity Calculation Method:** Purity is reported according to our validated laboratory method. For **single-peak samples**, purity equals the Peak Purity Index  $\times 100$  — a spectral-homogeneity measure that detects co-eluting species hidden beneath the main peak. For **multi-peak samples**, purity equals the chromatographic main-peak %purity (Area% of the total integrated UV signal) multiplied by the main peak's Peak Purity Index, giving an overall purity that accounts for both extraneous peaks and any spectral heterogeneity within the main peak. For **blends**, each component's purity is reported individually as its Peak Purity Index  $\times 100$ , with the ratio between components determined by their relative chromatographic area (Area%). This follows the Bio-Analysis Centre's validated method for multi-component samples.



### CERTIFICATE VERIFICATION

INDEPENDENTLY VERIFIED

[peptideverify.co.uk/verify/PV-690108-5RMU](https://peptideverify.co.uk/verify/PV-690108-5RMU)

Scan QR code or visit the URL above to verify this certificate's authenticity and view detailed analysis data.

## IMPORTANT NOTE

Sample Composition reflects UV-detectable compounds only. Non-UV excipients (mannitol, sugars, salts) are not measured by this method.

**PeptideVerify** — Independent Third-Party Peptide Verification

Analysis performed under controlled laboratory conditions using validated analytical methods.

This certificate relates solely to the sample as received and tested. Issued for research and informational purposes only — not an endorsement for human or veterinary use.

Certificate ID: PV-690108-5RMU | Batch/Lot: ALPRT2001 | Customer: Alphamino | Generated: 02 May 2026, 10:12